

# WESTRIM™

## PRODUCTS

A FRANCE COMPANY

### TOP OFF LED POWER SUPPLY BOX for WET, Damp, or Dry locations

#### TC15TOW-LED 14.9”L x 5.3”W x 3.2”H top off, mount with cover up

WET/Damp/Dry LED Power Supply Boxes may be used outdoors without additional protection from precipitation.

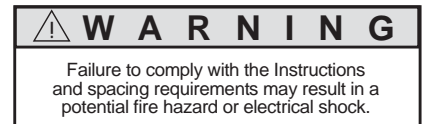
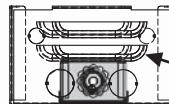
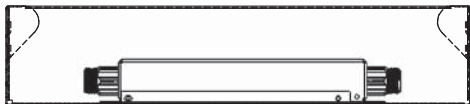
Our LED Power Supply enclosures exceed the requirements of the 2008 NEC, Paragraph 600-8, Electric Signs and Outline Lighting – Enclosures and are listed to applicable US and Canadian standards and requirements by Underwriter's Laboratories, Inc. including UL48 and UL879. They are made of G90 galvanized steel sheet, .029 inch thick, which exceeds the requirements for minimum thickness and corrosion protection.

Westrim LED Power Supply Boxes are rated WET for outdoor exposed locations, subject to precipitation, direct spray or splashing, do not require extra rain/splash shields nor require being raised above a flat mounting surface as other brands do. Do not place where subject to flooding or standing water.

The interior water shields protect live parts from rain and splashing while easily moving out of the way during installation. The shields provide additional electrical insulation between live parts and the endplate and reduce the risk of cuts and scrapes to the installer's hands.



FOR PROPER WATER PROTECTION AND VENTILATION, LOUVERS MUST BE HORIZONTAL



#### **INSTRUCTIONS FOR USE:**

- Locate the LED Power Supply box in an accessible indoor or outdoor location and securely fasten in place.
- Locate the LED Power Supply box so the louvers are horizontal to prevent water from directly entering the louvers and to ensure proper convective air flow to ventilate the unit and prevent overheating. Do NOT place the LED Power Supply box in a location where it is subject to standing water or flooding. The box is designed with drain holes, so no drilling is required. If used above a suspended ceiling, do NOT use the ceiling grid for support.
- Securely fasten the LED Power Supply to the bottom of the LED Power Supply box. Heat transfer may be increased if the bottom and one side of the LED Power Supply is mounted in direct contact with the bottom and side of the LED Power Supply box if possible to do so while maintaining the minimum spacing requirements. When the LED Power Supply box is located in an outdoor location, the LED Power Supply body must be mounted with a minimum 1/2 inch spacing off of the bottom of the box due to the potential for water to collect on the bottom of the box. Center LED Power Supply in box if used in wet location.
- Do NOT leave any knockouts open. (If a knockout is removed and not used, place a cap intended for the purpose in the unused holes.)
- Make sure the primary wiring is routed such that it does not compromise the spacing requirements.
- 1/2" knockouts are provided on each end for attachment of properly rated switches.
- After each wire enters the enclosure, it should be formed into a drip loop.
- Make sure the LED Power Supply and the LED Power Supply box are properly grounded. A service ground must be bonded to the LED Power Supply Box.
- Make sure no metal shavings are left in the box.
- Secure the cover with self-piercing sheet metal screws supplied. Do NOT leave the cover off of the LED Power Supply Box.
- Make sure no metal filings are left in the box.

#### **Optional Grounding Feature - Instructions**

To use the optional grounding feature on either end or both ends, inside or outside of the LED Power Supply box:

1. Remove the 1/4" knockout near the bottom edge of the end plate.
2. Insert the bolt so that the thread extends into the area where a ground is desired (inside or outside of the can).
3. Secure the bolt in place by using one of the green nuts provided.
4. Attach ground wire(s) to bolt using cup-washers and nuts provided.